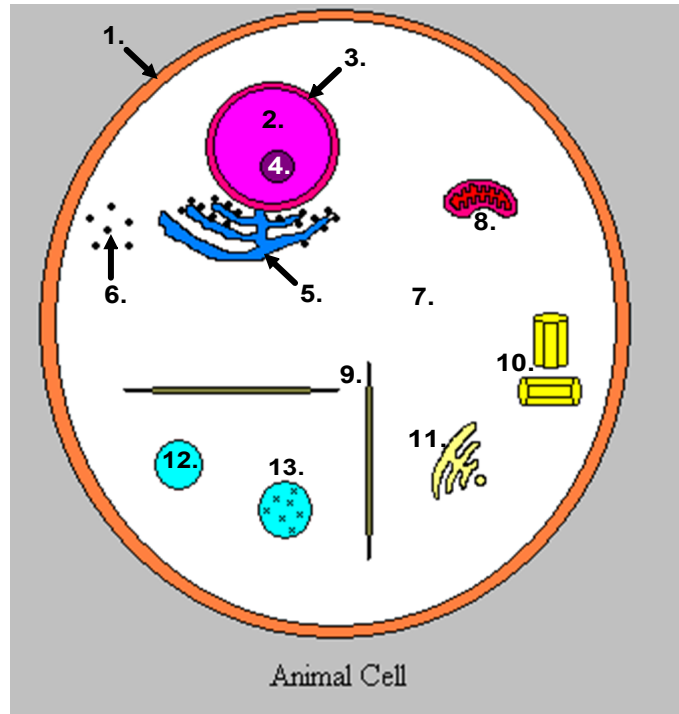


1. Cell Membrane  
Controls what goes in and out of the cell.
2. Nucleus  
Controls everything that happens inside the cell.  
Contains the DNA.
3. Nuclear Membrane  
Controls what goes in and out of the nucleus.
4. Nucleolus  
Makes ribosomes.
5. Endoplasmic Reticulum (ER)  
Transports materials within the cell.  
  
Rough ER has ribosomes on it,  
Smooth ER does not.
6. Ribosomes  
Make proteins.



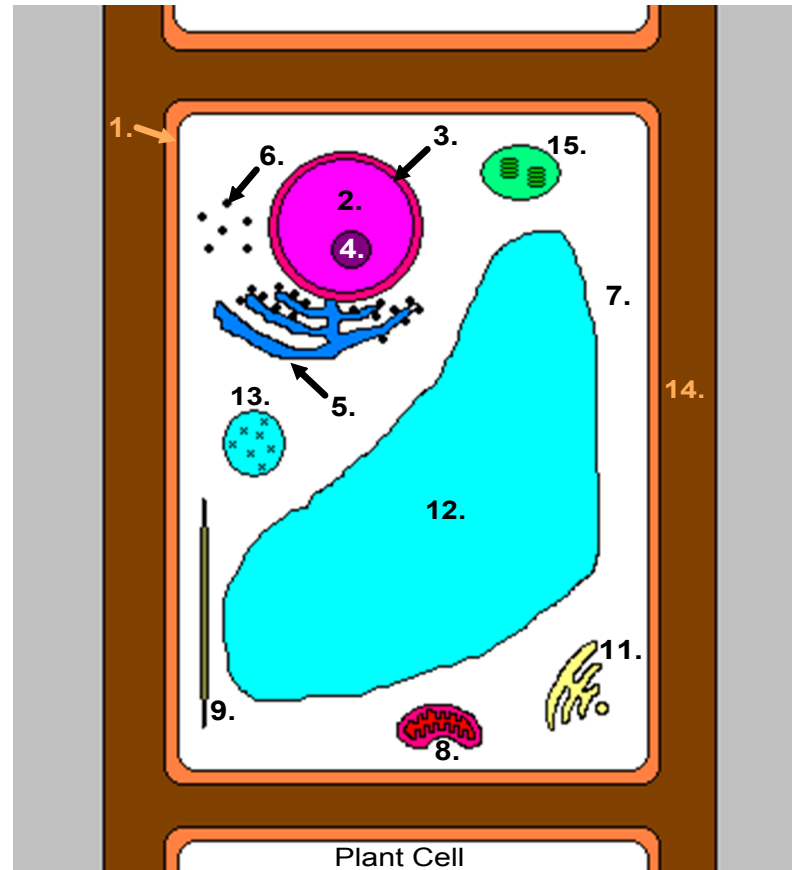
7. Cytoplasm  
The fluid inside of the cell.
8. Mitochondrion  
"Powerhouse" of the cell.  
Breaks down nutrients for energy.
9. Cytoskeleton  
Gives structure & support.  
Helps move things around in the cell.
10. Centriole  
Helps the cell divide.
11. Golgi Body  
Packages materials to be sent out of the cell.
12. Vacuole  
Stores food, water and waste.
13. Lysosome  
A type of vacuole that contains digestive enzymes to break things down.

### Proteins

- Structure Proteins → used to make cells
- Enzymes → drive chemical reactions
- Hormones → chemical messengers

Organelle - A structure inside a cell that performs a certain task for the cell.

1. Cell Membrane
2. Nucleus
3. Nuclear Membrane
4. Nucleolus
5. Endoplasmic Reticulum (ER)
6. Ribosomes
7. Cytoplasm
8. Mitochondrion
9. Cytoskeleton
11. Golgi Body



12. Vacuole  
Stores water.  
Supports plant by water pressure.
13. Lysosome
14. Cell Wall  
Gives structure and support.
15. Chloroplast  
Has chlorophyll for photosynthesis.

What organelles do animal cells have that plant cells do not have?

**centrioles**

What organelles do plant cells have that animal cells do not have?

**cell walls**

**chloroplasts**